



PAI Rear Main Seals

World Tested. Performance Proven. - ISO 9001 : CERTIFIED

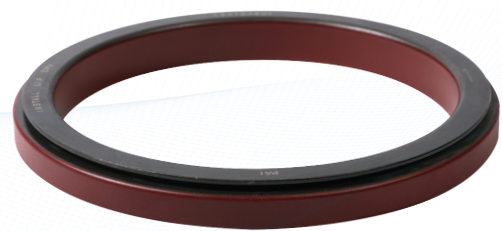
Caterpillar, Detroit Diesel, International and Mack Applications

PAI / Excel Reference	OEM Reference	Description	Application	Free I.D. in/mm	O.D. in/mm	Width in/mm
336011	CAT4W0452	Rear Seal Kit	Caterpillar 3300	6.319in 160.50mm	7.346in 186.58mm	.360in 9.14mm
336012	CAT142-5868	Rear Seal (Blue)	Caterpillar 3400/3406E C15,C16,C18	6.060in 153.92mm	7.340in 186.43mm	.750in 19.05mm
336015	CAT222-3909	Rear Seal Kit	Caterpillar 3116 & C7	5.125in 130.17mm	6.008in 152.60mm	.425in 10.79mm
336016	CAT7C1728	Rear Seal Kit	Caterpillar 3176, C10, C11, C13	6.138in 155.90mm	8.625in 219.07mm	.314in 7.97mm
336034	CAT100-5421	Rear Seal	Caterpillar C10, C11, C13	6.250in 158.75mm	7.250in 184.15mm	.630in 16.00mm
336035	CAT7C4297	Rear Seal	Caterpillar 3300	6.250in 158.75mm	7.250in 184.15mm	.630in 16.00mm
336042	CAT115-4120	Crankshaft Seal	Caterpillar 3116 & C7	<i>Wear Ring</i> 5.000in 127.00mm ----- <i>w/o Wear Ring</i> 5.120in 130.04mm	6.005in 152.52mm	.413in 10.49mm
636019	DDC23513578	Rear Seal Kit (Double Lip Neoprene)	Detroit Detroit Series 50 & 60	5.187in 131.74mm	6.506in 165.25mm	.625in 15.87mm
636020	DDC23516969	Rear Seal Kit (Teflon)	Detroit Detroit Series 50 & 60	5.187in 131.74mm	6.496in 165.00mm	.854in 21.70mm
636024	DDC23519651	Rear Seal	Detroit Detroit Series 50 & 60	5.187in 131.74mm	6.506in 165.25mm	.625in 15.87mm
BRG-3805	MAK1458-99499	Wear Ring (Thin) (Use w/ 436001 Seal)	International Early DT-466 to 1993	5.00in 127.00mm	5.44in 138.17mm	1.00in 25.40mm
436001	NAV180847C1	Rear Seal (Use w/ or w/o Wear Ring BRG-3805)	International Early DT-466 to 1993	5.00in 127.00mm	6.131in 155.72mm	.500in 12.70mm
436002	NAV1809964C92	Rear Seal Kit (w/ Thick Wear Ring)	International Early DT-466 to 1993	5.125in 130.17mm	6.13in 155.70mm	.52in 13.20mm

PAI Rear Main Seals

PAI / Excel Reference	OEM Reference	Description	Application	Free I.D. in/mm	O.D. in/mm	Width in/mm
436015	NAV1817867C92	Rear Seal Kit	International 1993-2003 HEUI DT-466E & 530E	5.678in 144.22mm	6.56in 166.62mm	.510in 12.95mm
436016	NAV1841938C1	Rear Seal	International DT-466E, 530E, 570, 2004	6.110in 155.19mm	7.355in 186.81mm	.780in 19.81mm
441451	NAV1841139C93	Real Seal Kit	International 1993-2003 HEUI DT-466E & 530E	5.54in 140.84mm	6.56in 166.5mm	1.00in 25.40mm
EKT-3800 EM38000	MAK57GC186A	Rear Seal Kit & Wear Ring (Neoprene)	Mack E6 & E7	6.000in 152.40mm	6.75in 171.45mm	.50in 12.7mm
ESE-7960	MAK446GC238B	Rear Seal (Neoprene)	Mack E6 & E7	6.000in 152.40mm	6.757in 171.62mm	.500in 12.70mm
ESE-7969	MAK446GC310P10	Rear Seal (Teflon)	Mack E6 & E7	6.00in 152.40mm	6.757in 171.62mm	.420in 10.68mm
ESE-7981	MAK57GC371	Rear Seal Kit & Wear Ring (Teflon)	Mack E6 & E7	6.00in 152.40mm	6.77in 171.95mm	.780in 19.81mm

**PAI is proud to be
your official supplier
for Heavy Duty Rear
Main Seals**



Call 770-822-1000 or visit www.paiindustries.com for our complete line of PAI Rear Main Seals.